



MONTHLY MEMBERSHIP PROGRESS REPORT

District 202 F

Results as of: 05/31/2019

GMT: CLIFFORD HEYWOOD

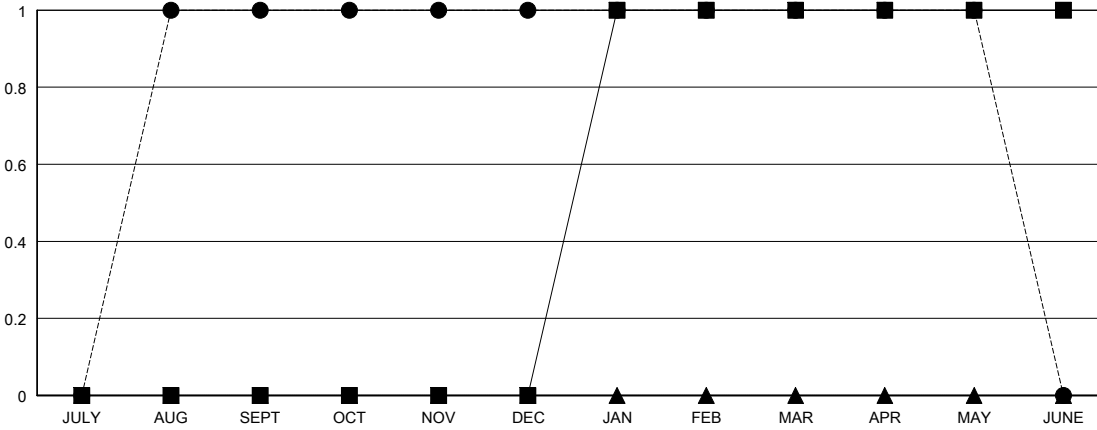
LOCATION NEW ZEALAND

GMT CA

Clubs			
RESULTS FOR 2018-2019			
QUARTER	NEW CLUB GOAL	NEW CLUBS	DROPPED CLUBS
JULY/AUG/SEPT	0	1	2
OCT/NOV/DEC	0	0	0
JAN/FEB/MAR	1	0	0
APR/MAY/JUNE	0	0	0

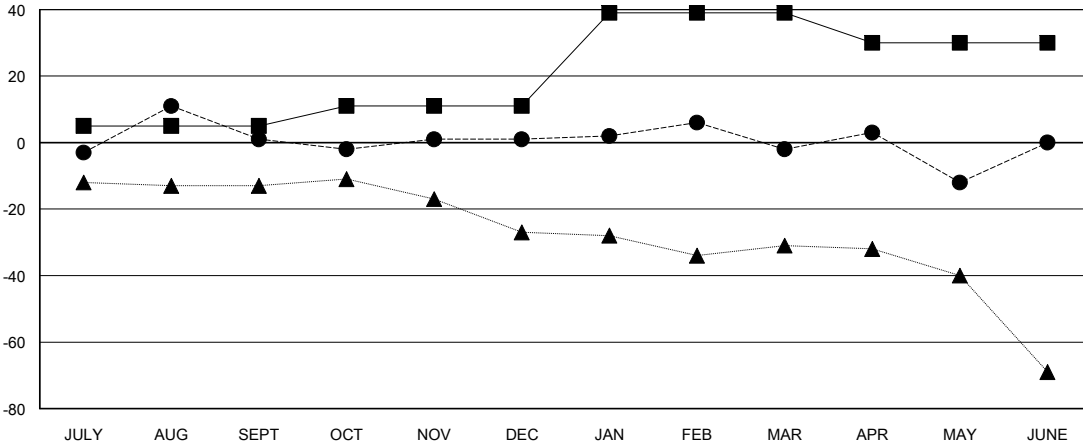
Members			
RESULTS FOR 2018-2019			
QUARTER	MEMBER GROWTH NET GOAL	MEMBER GROWTH ACTUAL	DROPPED MEMBERS ACTUAL (including transfers)
JULY/AUG/SEPT	5	37	33
OCT/NOV/DEC	6	26	22
JAN/FEB/MAR	28	13	16
APR/MAY/JUNE	-9	16	25

GOALS AND ACTUAL NEW CLUBS CUMULATIVE



- - CURRENT YEAR GOALS FOR NEW CLUBS
- - CURRENT YEAR ACTUAL NEW CLUBS
- ▲ - LAST YEAR ACTUAL NEW CLUBS

GOALS AND ACTUAL MEMBERS CUMULATIVE



- - MEMBER GROWTH NET GOAL
- - MEMBER GROWTH ACTUAL
- ▲ - LAST YEAR MEMBERSHIP ACTUAL

DROPPED CLUBS: 2

29 CLUBS OF 48 ADDED 1 OR MORE NEW MEMBERS

GENDER DISTRIBUTION	
MALE	886 (64.77%)
FEMALE	482 (35.23%)
Women Percentage Fiscal Year Goal: 37%	

DROPPED MEMBERS	
DECEASED	19
CLUB CANCELLED	0
OTHER	77
TOTAL	96

[CLICK HERE FOR CUMULATIVE MEMBERSHIP DATA](#)

TOTAL FAMILY UNIT MEMBERS	77
FAMILY MEMBERS PAYING HALF DUES	39